

How to Run OpenSees on NEEShub

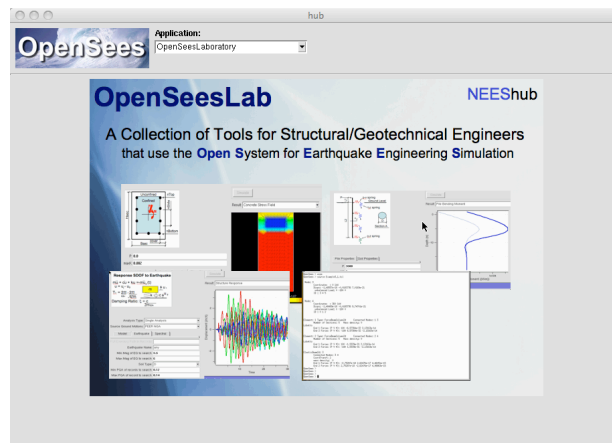
Frank McKenna
UC Berkeley
OpenSees Days 2011

<http://opensees.berkeley.edu/wiki/index.php/OpenSeesDays2011>



OpenSeesLab:

a collection of tools for OpenSees Users
using the resources available on NEEShub



<http://www.nees.org/tools/openseeslab>

Instructions to Launch OpenSees Interpreter in OpenSeesLab from your Browser

1. Start Browser & go to <http://nees.org>
2. Login
3. Under “Tools & Resources” select Tools
4. In Resources find and select “OpenSees Laboratory”
5. Hit the big black “Launch Tool”
6. Mac Users may want to hit popout (bottom right)
7. In the tools pull-down menu select OpenSees Interpreter
8. Type OpenSees commands here are some useful Unix ones:
 - ls** (list files in current directory),
 - cd dir** (change to another directory dir),
 - unzip file.zip** (to unzip a file file.zip) and
 - tar -cvf dir.zip dir** (to create a zip file dir.zip of a directory dir)
9. Other useful tools include File Transfer (for uploading files to the hub, and downloading files to your machine) and File Edit.